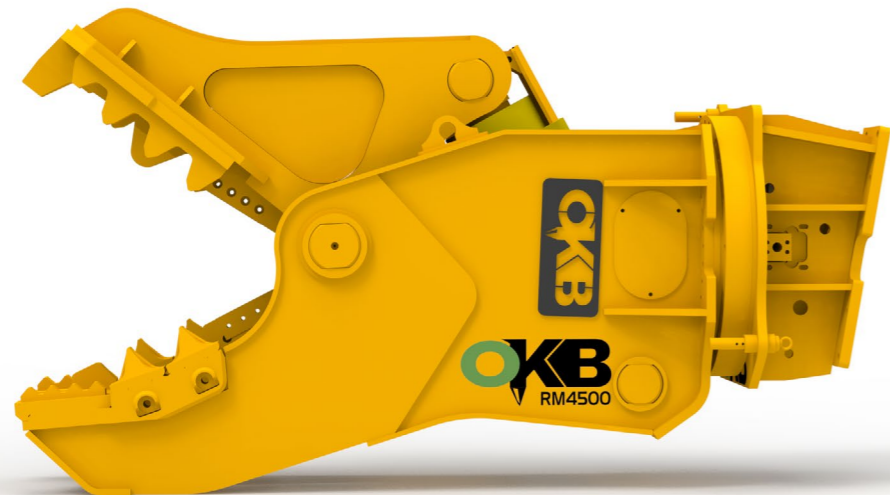


ROTATING PULVERISERS

Designed for primary demolition, secondary concrete reduction and material processing.



ROTATING PULVERISERS SPECIFICATIONS

Item	Unit	RM350	RM1000	RM2500	RM4000	RM4500
Excavator weight	T	5-12	10-15	15-22	26-32	35-50
Tool weight	KG	570	1100	1690	2750	4100
Oil Flow	L/N	50-120	100-180	130-150	200-220	220-280
Pressure	BAR	220-300	300-350	300-350	300-350	300-350
Opening Size	MM	500	580	700	930	1000
Height	MM	1590	1710	2150	2530	2780

- Designed to crush concrete and with a steel shear incorporated in the rear of the jaws, these powerful attachments are extremely versatile providing easy maintenance, and maximum breaking force.

- Weight Range from 5T – 50T.

- Hydraulic Rotation.

Applications:

- Primary and secondary demolition.

- Concrete pulverising and recycling.

- Material processing and separation.